



## **Wave**

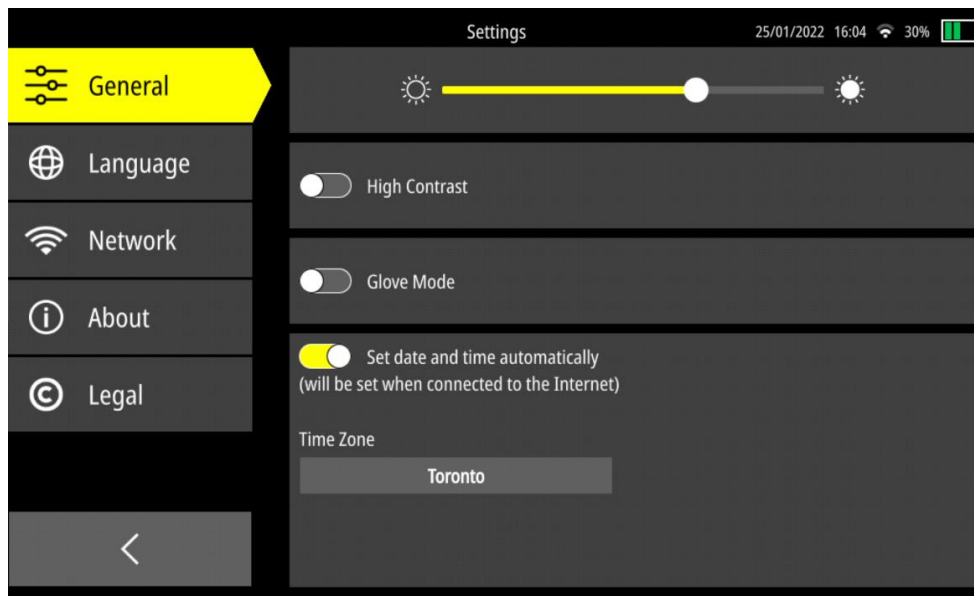
What's new – Release 1.7.0

## 1 New GPO Menu on Wave

The General Purpose Output (GPO) menu allows you to control an auxiliary output to the Wave. Also, the alarm of the GPO varies at the visual alarm rate instead of the PRF rate, which was not practical for the users.

## 2 Touch Sensitivity Has Been Adjusted for Wave

It is possible to adjust the sensitivity of the touch screen. If the Glove Mode is activated, the touch screen is responsive to finger movements with gloves. By default, this mode is not activated.

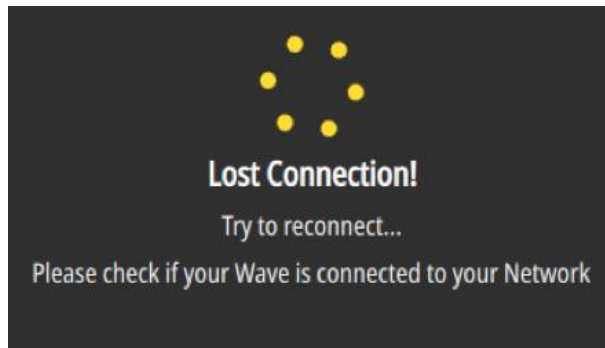


*Figure 1 – Glove mode is available Settings*

## 3 Connection Loss between Wave and Wave Companion

In some situations, it is possible to lose the connection between a Wave and a Wave Companion. This can happen, for example, when you change the Wi-Fi/Ethernet connection mode of your Wave. The device will automatically connect to another network. Another example is when the network cable of the Wave has been disconnected.

In short, when this happens, a spinning wheel appears in **Transfer** and **Download** tabs in Wave Companion, as seen below.



*Figure 2 – Spinning wheel when the connection is lost*



**NOTE:** The spinning wheel appears after 30-40 seconds after the connection is lost.

To solve the problem, simply reconnect the Wave to the Wave Companion.



**IMPORTANT:** If the connection loss duration is too long (2 minutes and more), the Wave will be considered completely disconnected. This means that there is an issue with the user's network and not with the Wave Companion.