

Specification

Clamp Width	Max opening 55mm
Encoder Wheel Diameter	26mm
Encoder Resolution	12.6 ticks/mm
Dust and Waterproof	IP68 rated
Encoder	Adjustable encoder spring-loading
Positioning	Can be positioned at 0° and 90° (for B, C and D-scans)
Connections	Connection to fit Sonatest Veo3, Prisma and RSflite

Related Products

veo³



RSflite



UK

Sonatest (HQ)
Dickens Road
Old Wolverton, Milton Keynes
MK12 5QQ
United Kingdom

t: +44 (0) 1908 316345

e: sales@sonatest.com

USA

Sonatest (North America)
12775 Cogburn
San Antonio, Texas
78249
United States

t: +1 (210) 697 0335

e: sales@sonatestinc.com

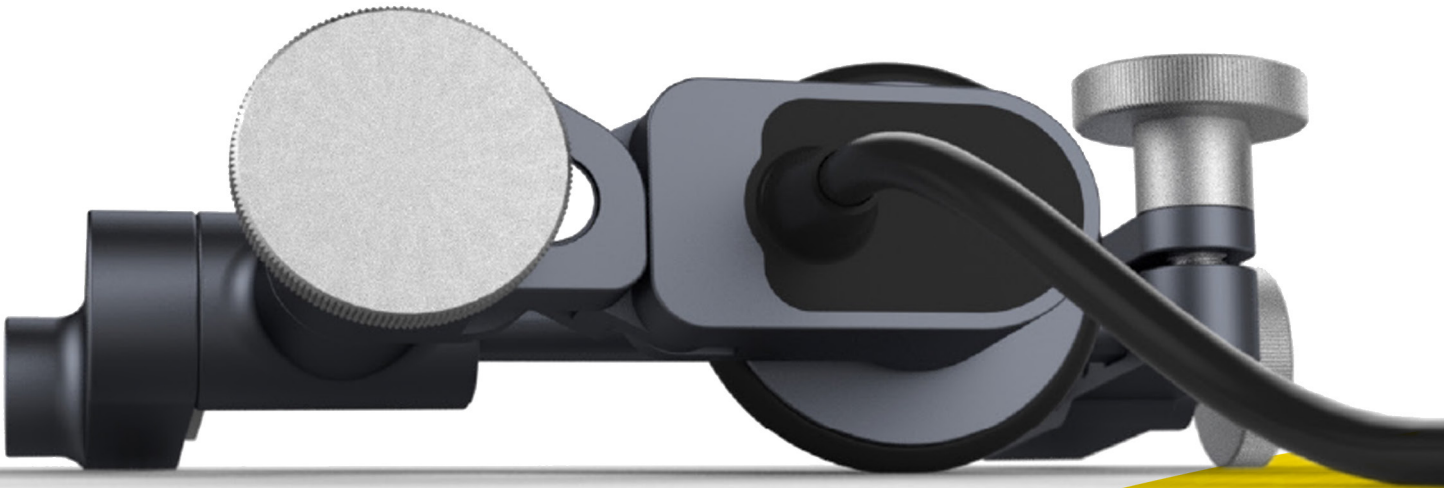


sonatest.com





AXYS - Universal Encoding Clamp



Inspect with
Confidence

Simplicity | Capability | Reliability

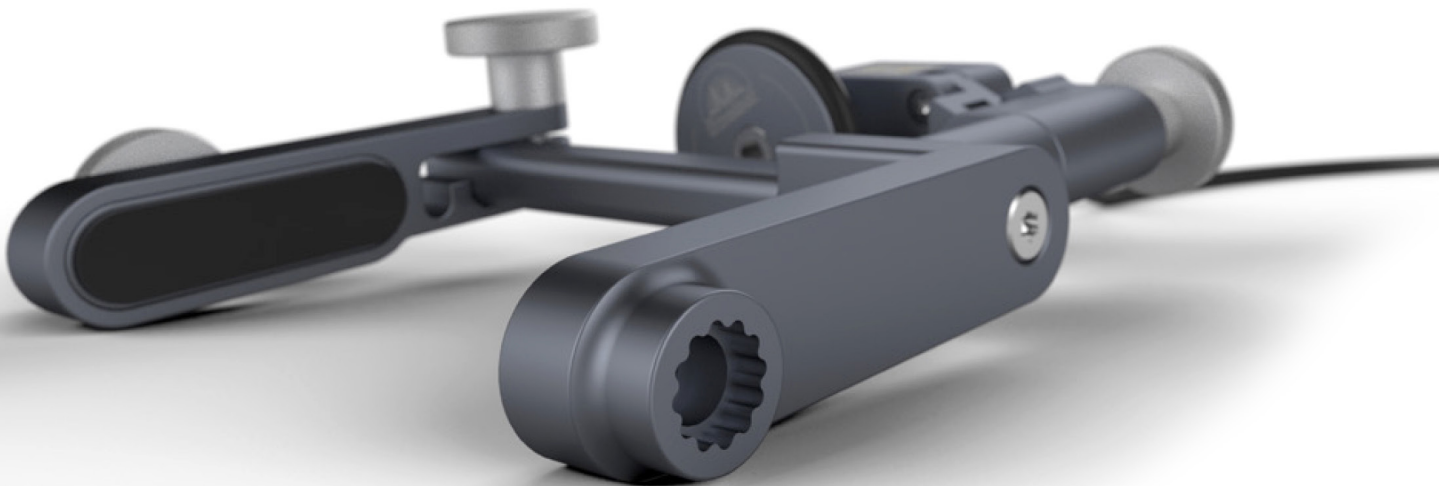
sonatest.com

AXYS

AXYS is a universal accessory for single axis inspections, easily set up without any tools.

The **AXYS** magnetic encoder's IP68 isolated electronics have been designed and tested to protect against dust ingress and can be used under water for prolonged periods of time.

The exposed mechanical components have all been selected for their resilience to dust, chemicals and water. This combination really does mean the **AXYS** encoder can go anywhere that probes and wedges do. The **AXYS** clamp enables you to attach our encoder to all our probes and wedges and those from other manufacturers.





AXYS Encoder

- The position of the encoder can be rotated through 90 degrees enabling scanning in multiple directions.
- The angle of the encoder can be adjusted. There are 12 possible positions through 360 degrees (30 degree steps). With 60 degrees of movement in the spring, the encoder can be adjusted to any angle.
- The fixed step approach means the angular adjustment of the encoder is truly toolless.
- Designed and tested with an ingress protection rating of IP68.

What's in the box?

- AXYS LEMO 2.5 m or AXYS LEMO 5.0
- Spare Stainless Steel Wheel
- Quick Start Guide/Instructions



AXYS Clamp

- Provided with a spare stainless steel solid wheel for use on surfaces where the standard rubber wheel may slip.
- Clamp width can be adjusted from 11 mm to 55 mm.
- Clamping force can be easily adjusted using the clamp adjustment screw.
- The AXYS clamp can be used with any manufacturer's wedge and probe combination.

