



WheelProbe 2

- Innovative. High performance. Versatile.



Inspect with
Confidence

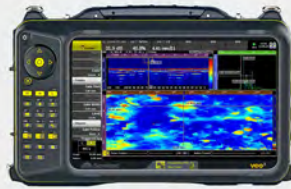
Simplicity | Capability | Reliability

sonatest.com

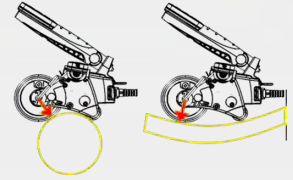
Innovative



High Performance



Versatile



WheelProbe 2

The Wheel Probe 2 is the latest generation in this technology, advancing on the original idea brought to market from Sonatest.

Unique Rubber Wheel Material

Sonatest's rubber wheel material is unique among wheel probes in the industry. As a patented technology, the material is designed to match the acoustic impedance of water, interface signals are reduced giving unequalled near surface resolution

A Spray not a Hose!

The WheelProbe 2 only requires a light spray of water on the test surface to acquire great results! Unlike some scanner systems which require a constant water feed to work, this makes the WP2 an excellent solution for inspection in contaminated areas where flowing water is a hazard to contamination or produced slip and trip hazards if not contained properly.

The WP2's low water requirements is easy to manage and post clean making it an excellent solution for nuclear and chemical sites where containment is key!



Composite Inspection

WP2 allows you to have a versatile solution for a wide range of composite inspection applications. From large flat panels of monolithic composite to the complex curvature of aircraft engine housing and F1 chassis.

With a wide range of frequency options across the 64 element and 128 element versions of the WP2, we offer solutions for all composite types and thicknesses.

Additionally, the 1MHz 102 element WP2 was designed for deep penetration of attenuative materials and is an excellent solution for thick composites and GFRP type materials.



Corrosion monitoring

WP2 is a perfect solution for corrosion monitoring on pipelines, storage tanks and infrastructure, with our wide range of frequencies and choice of 50mm or 102mm aperture widths, the WP2 can quickly cover large inspection areas, providing high quality repeatable data to the user.

Ideal for ferrous and non-ferrous materials, on bare metal or through coatings, WP2 is perfect for all corrosion monitoring applications.

Attachments for all Conditions!

WP2 has optional attachments for all occasions:

- Horizontal and joystick handles for user comfort in differing scanning orientations.
- Fixed and adjustable front brackets to stabilise and adhere to flat or curved surfaces
- Magnetic rollers for better scanning control on ferrous materials
- Special roller designs for scanning over welds and axially along pipelines
- Laser alignment tools to keep your scanning on track

Build your ideal setup

Choose your buggy size and frequency

1	WP2 64 Element Buggy	WP2 128 Element Buggy
		

Choose your handle style

2	Horizontal Handle	Vertical "Joystick" Handle
		

Choose your accessories

3	Brackets	Roller Types
		
	Laser Guidance Packs	Cable types
		

Key Features

Well Defined Laser Rolling

Equipped with two LED feedback indicators (WP2 E128 features two lasers) and the optional display attachment, technicians can now prioritize the acquisition of consistently high-quality UT data. These dual guiding lines serve multiple purposes, including highlighting the anticipated C-scan zone or providing surface guidance along a designated surface geometry.

Configurable Handle

With a choice of either a single 'joy-stick' or a crossbar handle, the angle can be adjusted for operator comfort, and with the remote control available for either left or right-handed operation, the ergonomics of this WP2 are unsurpassed.



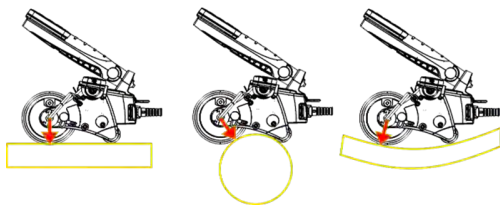
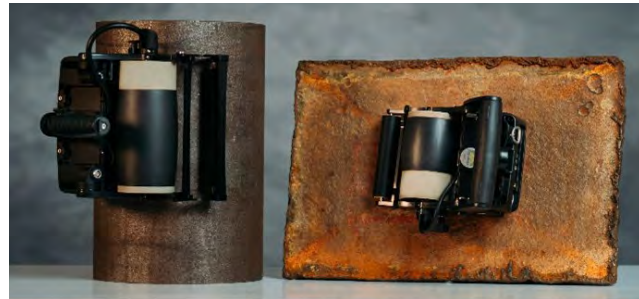
Key Features - continued

Roller Profile Options

With the profiled, flat and precision roller options, a few moments' effort converts your WP2 from a flat-surface composite inspection tool, to a radial or axial pipe corrosion mapping system. Able to scan right to the edges of the part, convex, concave and even irregular surface area are catered for.

Magnetic Roller Attachments

With the magnetic roller attachment, technicians inspecting ferritic materials are aided with overhead, vertical scans and difficult access inspections. Paired with the adjustable front bracket, the WP2 helps hold your position and scan line on OD and ID curvatures allowing for higher accuracy repeatable results.



Perfect fit on OD and ID parts

All WP2 are designed to inspect flat surfaces as well as convex and concave curved surfaces. The curvature adjustment bar offers an intuitive graduated guideline that reads part radius of curvature (in both metric & imperial units).

Specification

	WP2 64E	WP2 128E
Weight	1.06kg (2.34lb)	1.33kg (2.93lb)
Dimensions H x L x W	125 x 150 x 155mm (4.9 x 5.9 x 6.1in)	125 x 211 x 155 mm (4.9 x 8.3 x 6.1 in)
Operating Temp	10 to 50°C	10 to 50°C
Frequency options	2 MHz, 3.5 MHz, 5 MHz and 10 MHz	1 MHz, 2 MHz, 3.5 MHz, 5 MHz and 10 MHz
Number of Elements	64	128 (102 for 1 MHz)
Total Aperture	51.1mm (2.0")	102.2mm (4.0")
Sensitivity Homogeneity	± 3db	± 3db



UK

Sonatest (HQ)
Dickens Road
Old Wolverton, Milton Keynes
MK12 5QQ
United Kingdom
t: +44 (0) 1908 316345
e: sales@sonatest.com

USA

Sonatest (North America)
12775 Cogburn
San Antonio, Texas
78249
United States
t: +1 (210) 697 0335
e: sales@sonatestinc.com

sonatest.com

