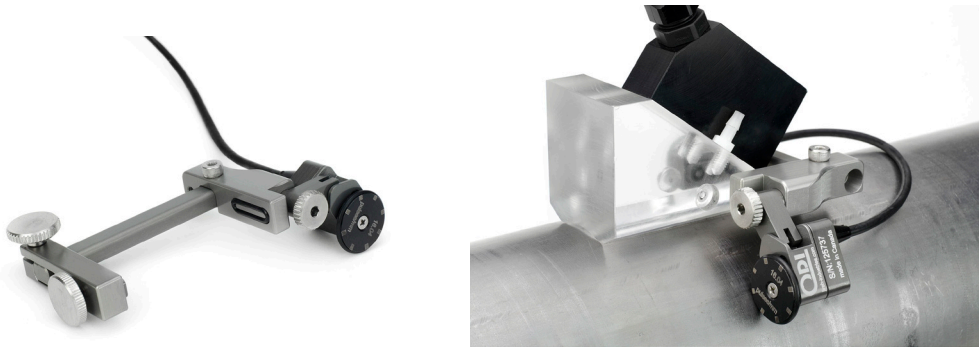




## Odi – Compact Universal Encoder



### Description

The Odi encoder is used to provide encoded position of a probe along the scan axis. The small size of the Odi makes it a perfect tool for hard to access areas or where space is limited. The Odi has a clamp system so it can be used with any manufacturer wedge and probe combination. This also allows it to be clamped to a scanning frame to provide encoded position

### Benefits

- **Quick Adjust Clamp:** This system allows the operator to fix the encoder to any probe/wedge or object to provide encoded position (no tools required).
- **Environmental Sealing:** The Odi is waterproof and constructed from corrosion resistant materials.
- **Encoder Output:** The Odi is available with a variety of encoder output cable options to be used with your instrument of choice. (See ordering information).
- **Configurable:** The Odi encoder can be positioned at 0° or 90° to accommodate different clamping arrangements. The Odi also has an adjustable pivot point to ensure the spring loaded wheel makes positive contact with the inspection surface.

**Simplicity | Capability | Reliability**

## Specifications

- **Clamp Width:** Max clamp opening 50mm (1.97in)\*
  - **Encoder Wheel Diameter:** 20.57mm (0.810in)
  - **Encoder cable:** Compatible with Sonatest instruments
  - **Encoder Resolution:** 16.04 pulses/mm
- \* Larger slider bars available

## Standard Kit Content (JX-1004)

- Odi Encoder with 2.5M (8ft) encoder cable
- Universal clamp system
- Carrying case

## Accessories

- Probe & Wedges – Refer to Sonatest transducer catalogue
- JX-1003 – Irrigation kit (tubes and fittings)



## Related Products

veo+



Veo+ (Multiscan)

pris<sup>na</sup>



Prisma (IPA or 2TOFD)

### Distributed by:

**Sonatest (Head Office)**  
Dickens Road, Old Wolverton  
Milton Keynes, MK12 5QQ  
t: +44 (0)1908 316345  
e: sales@sonatest.com

**Sonatest (North America)**  
12775 Cogburn, San Antonio  
Texas, 78249  
t: +1 (210) 697-0335  
e: sales@sonatestinc.com