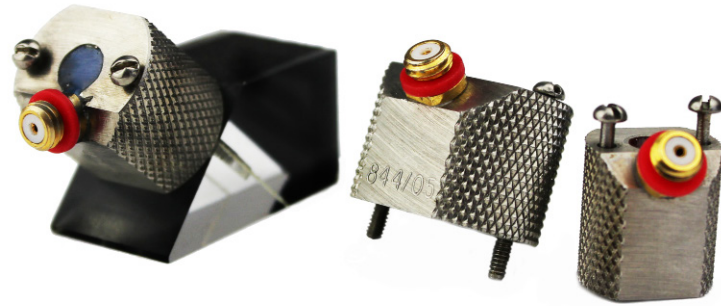


Miniature Shearwave Transducers & Wedges

MSR, MSG or PMS

Frequent Applications

- Ceramics
- Forgings
- Tube & Pipe
- Critical Welds
- General Welds



Transducer Features

- Single angle beam shear wave contact probe.
- Circular, lead metaniobate crystal.
- High damped for wide bandwidth (MSR/PMS).
- Medium damped for medium bandwidth (MSG).
- Captive screws for attaching to wedge.

Wedge Features

- Wedge beam shear wave contact probe.
- Attached by screws to MSR, MSG and PMS transducers. 1-64 threaded holes.
- Axial and circumferential ID or OD profiling available.

Transducer Models				
MSR (Resolution)	MSG (Gain)	PMS (Platinum)	f	∅
p/n			(MHz)	(")
MSR2525	MSG2525	PMS2525	2.25	1/4
MSR3725	MSG3725	-	2.25	3/8
MSR5025	MSG5025	PMS5025	2.25	1/2
-	-	PMS503.5	3.5	1/2
MSR2550	MSG2550	PMS2550	5	1/4
-	-	PMS3725	2.25	3/8
MSR3750	MSG3750	PMS3750	5	3/8
MSR5050	MSG5050	PMS5050	5	1/2
MSR2510	MSG2510	PMS2510	10	1/4
MSR3710	MSG3710	-	10	3/8

Wedge Models					
Part No.	Wedge Dimensions (in)				
p/n	∅ (°)	∅ (")	A (")	B (")	C (")
MW2545	45	1/4	0.5	0.7	0.4
MW3745	45	3/8	0.6	1.0	0.5
MW5045	45	1/2	0.9	1.0	0.5
MW2560	60	1/4	0.5	0.8	0.4
MW3760	60	3/8	0.6	0.9	0.5
MW5060	60	1/2	0.8	1.1	0.6
MW2570	70	1/4	0.5	0.87	0.43
MW3770	70	3/8	0.62	1.2	0.62
MW5070	70	1/2	0.88	1.2	0.6

Size Options	MSR, MSG & PMS			Connector Options									
Probe Size	Case Dimensions			Connector Type						Connector Position			
∅ (")	H (")	∅ ₁ (")	∅ ₂ (")	BNC (B)	Lemo 1 (L)	Lemo 00 (Z)	Microdot (D)	Subvis (S)	UHF (U)	Top (T)	Rear (R)	Side	Cable
1/4	0.50	0.50	0.41	-	-	-	•	-	-	•	-	-	-
3/8	0.56	0.56	0.50	-	-	-	•	-	-	•	-	-	-
1/2	0.56	0.75	0.63	-	-	-	•	-	-	•	-	-	-